



**REGIONAL SPECIALISED METEOROLOGICAL CENTRE-TROPICAL CYCLONES, NEW DELHI**  
**TROPICAL WEATHER OUTLOOK**

**DEMS-RSMC SPECIAL TROPICAL CYCLONES NEW DELHI DATED 04.11.2022**

**TROPICAL WEATHER OUTLOOK FOR NORTH INDIAN OCEAN (THE BAY OF BENGAL AND THE ARABIAN SEA) VALID FOR NEXT 120 HOURS ISSUED AT 0600 UTC OF 04.11.2022 BASED ON 0300 UTC OF 04.11.2022.**

**BAY OF BENGAL:**

YESTERDAY'S CYCLONIC CIRCULATION OVER TAMIL NADU & NEIGHBOURHOOD NOW LIES OVER KERELA COAST & NEIGHBOURHOOD.

A FRESH CYCLONIC CIRCULATION LIES OVER SOUTH ANDAMAN SEA AND ADJOINING SOUTHEAST BAY OF BENGAL.

A LOW PRESSURE AREA IS LIKELY TO FORM OVER SOUTHWEST BAY OF BENGAL OFF SRI LANKA COAST AROUND 09<sup>TH</sup> NOVEMBER, 2022. IT IS VERY LIKELY TO MOVE NORTHWESTWARDS TOWARDS TAMILNADU-PUDUCHERRY COASTS WITH POSSIBLE SLIGHT INTENSIFICATION DURING SUBSEQUENT 48 HOURS.

SCATTERED LOW AND MEDIUM CLOUDS WITH EMBEDDED MODERATE TO INTENSE CONVECTION LAY OVER PALK STRAIT, SOUTHWEST BAY OF BENGAL, SOUTH ANDAMAN SEA. SCATTERED LOW AND MEDIUM CLOUDS WITH EMBEDDED ISOLATED WEAK TO MODERATE CONVECTION LAY OVER REST BAY OF BENGAL.

**PROBABILITY OF CYCLOGENESIS (FORMATION OF DEPRESSION) DURING NEXT 120 HRS:**

24 HOURS	24-48 HOURS	48-72 HOURS	72-96 HOURS	96-120 HOURS
NIL	NIL	NIL	NIL	NIL

**ARABIAN SEA:**

SCATTERED LOW AND MEDIUM CLOUDS WITH EMBEDDED ISOLATED MODERATE TO INTENSE CONVECTION LAY OVER SOUTHEAST ARABIAN SEA OFF KARNATAKA-KERELA COASTS AND COMORIN AREA.

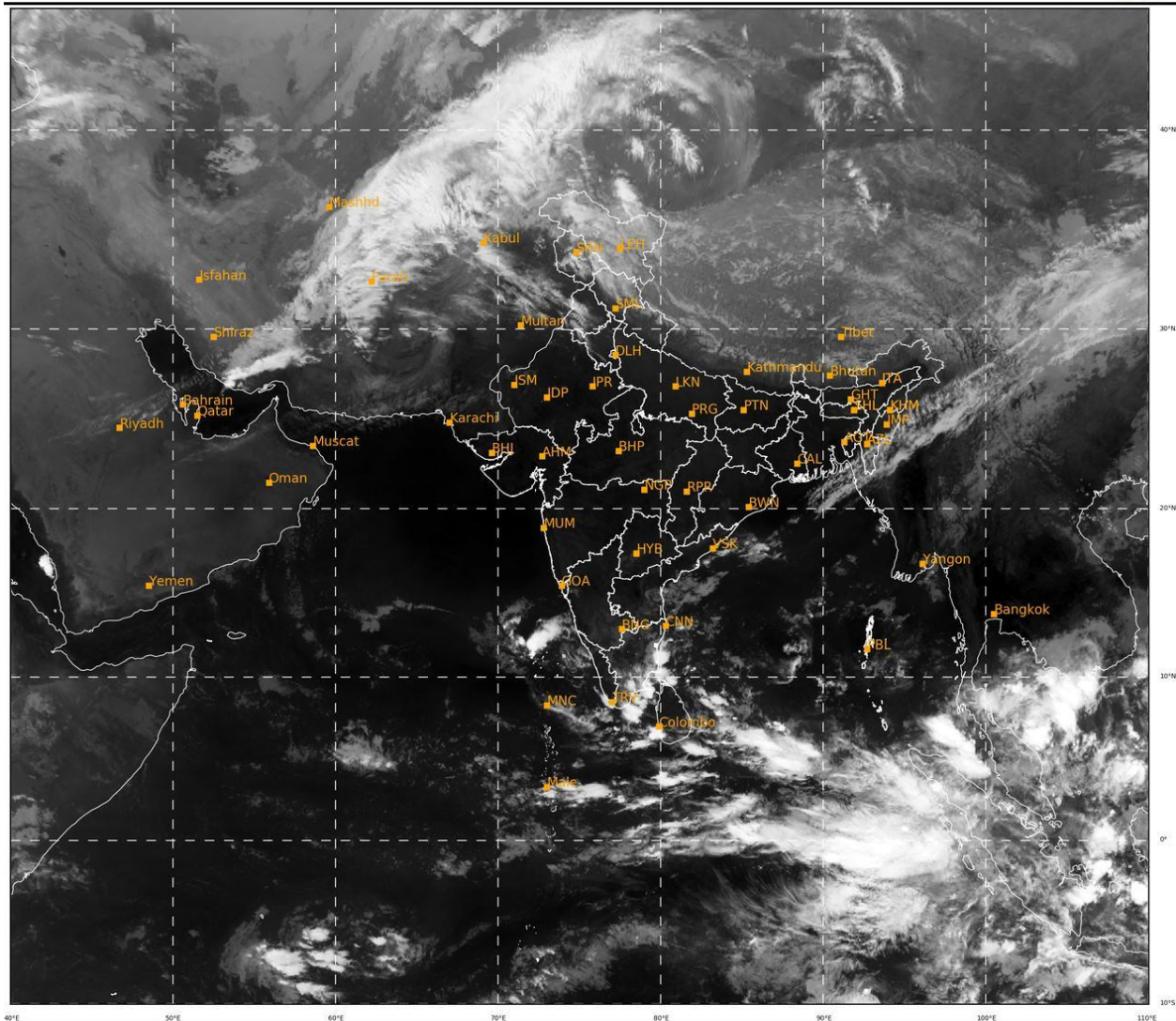
**PROBABILITY OF CYCLOGENESIS (FORMATION OF DEPRESSION) DURING NEXT 120 HRS:**

24 HOURS	24-48 HOURS	48-72 HOURS	72-96 HOURS	96-120 HOURS
NIL	NIL	NIL	NIL	NIL

**REMARKS:** NIL

SAT : INSAT-3D IMG  
 IMG\_TIR1 10.8 um  
 L1C Mercator

04-11-2022/(0300 to 0326) GMT  
 04-11-2022/(0830 to 0856) IST



490

939

IMD, DELHI

Cloud distribution: (a) Isolated: <25%, Scattered:25-50%, Broken: 51-75%, Solid:>75%, Convection Intensity: (a) Weak: Cloud Top Temperature (CTT) >-25°C, (b) Moderate: CTT: - 25°C to -40°C, (c) Intense: CTT: - 41°C to -70°C and (d) Very Intense: : Less than -70°C  
 PROBABILITY OF CYCLOGENESIS (FORMATION OF DEPRESSION): NIL: 0%, LOW: 1-33%, , MODERATE: 34-66% AND HIGH: 67-100%  
 This is a guidance Bulletin for WMO/ESCAP Panel Member countries. Visit respective National websites for Country specific Bulletins